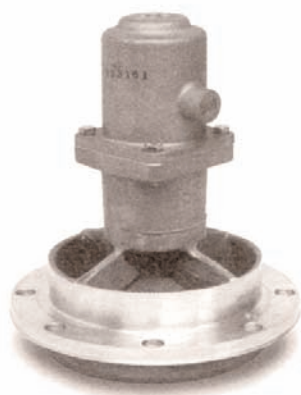


MOBILE EQUIPMENT TANK VENTS F646 SERIES VENT VALVES



F646

Whittaker F646 Series 5.25 inch vents are designed in accordance with DOT MC306 specifications and will mate with a standard four-inch TTMA sump ring. The venting capacity is 304,000 cu. ft/hr at five PSI and the cracking pressure is three PSI. The F646 vent is available in air and mechanically operated configurations.

The F646 series vents superceded the 4052 series vents and will interchange with the existing weld ring. An interconnecting rod and other hardware will be necessary.

Prior to using the F646 series vents on over the road equipment that may have to meet MC407 specifications, please contact Whittaker for application information.

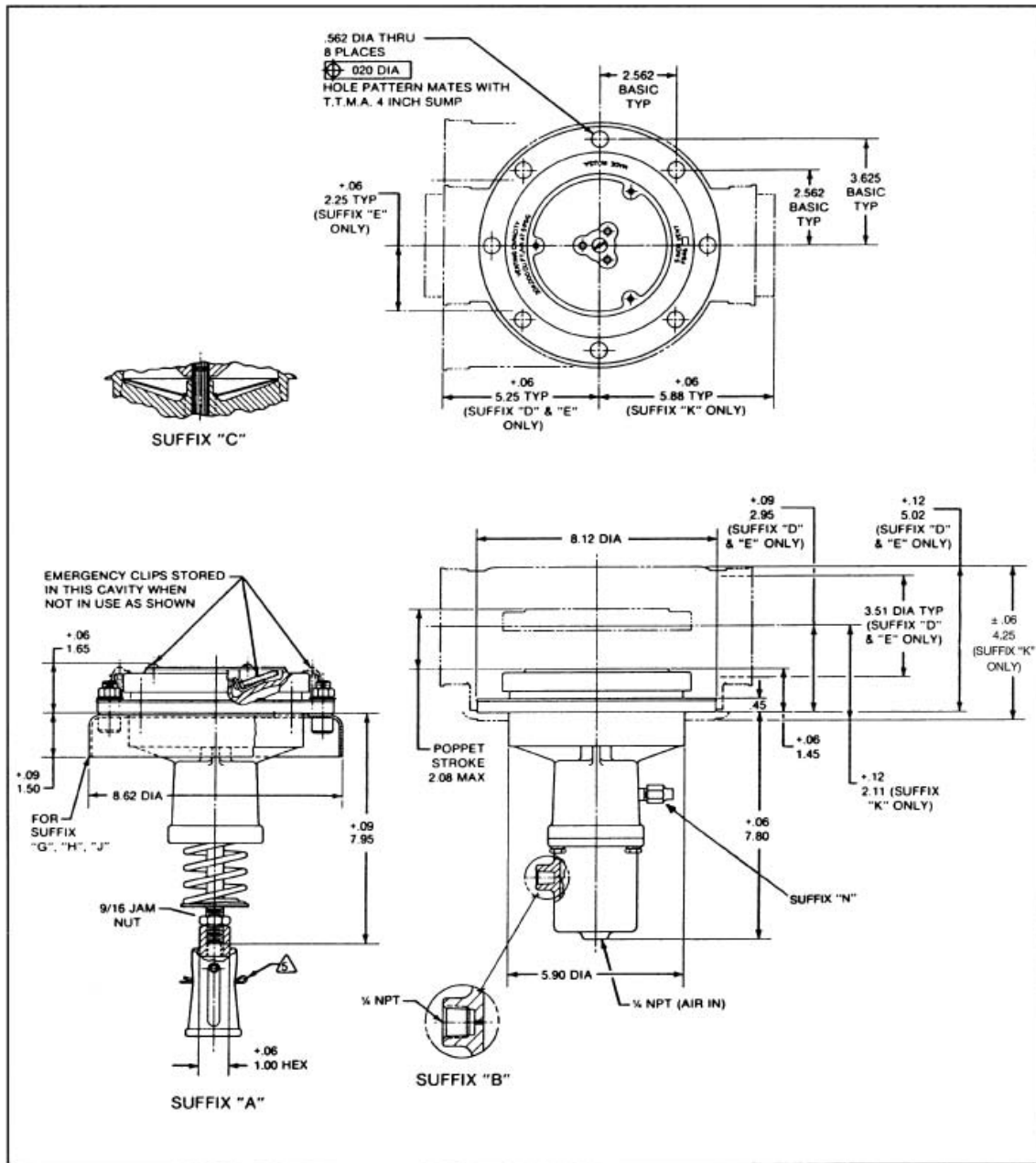
Vent valves should always be used with hoods to prevent water from entering the product area should the turn over rails be plugged.

Features

- Mechanical version furnished with five-foot long interconnecting rod
- Rigid and flexible vapor recovery hoods available
- Mechanical version has poppet locking kit to keep the vent closed in case of overturn allowing the internal valve to be opened
- Standard seals are available for all commercial automotive and aviation fuels. Viton® seals are available for special applications
- Free of iron and brass - can be used with liquid fertilizers (see modifications)
- Fire screen optional
- Double seal actuating piston vented externally on air operated version
- Molded and bonded poppet seal - assures leak free operation and minimum maintenance costs

MOBILE EQUIPMENT TANK VENTS

F646 SERIES VENT VALVES



Avery-Hardoll
Holland Way
Blandford Forum
Dorset DT11 7BJ
UK

Whittaker Controls
12838 Saticoy St
North Hollywood
California 91605-3505
USA

Tel: +44 (0) 1258 486600
Fax: +44 (0) 1258 486601

Telephone: +1 818 765 8160
FAX: + 1818 759 2194

www.meggittfuelling.com

www.wkr.com
www.meggitt.com

MEGGITT