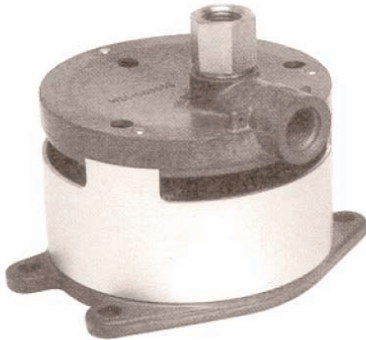


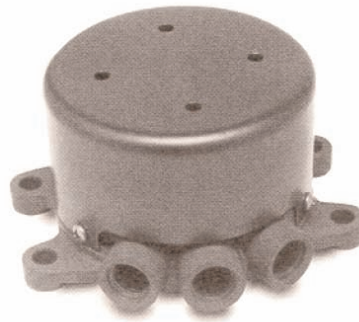
Meggitt Fuelling Products

Avery-Hardoll Whittaker Controls

FLOAT PILOT VALVES F602 - F610 - F619



F602



F619

FLOAT PILOT VALVES

The Whittaker float pilot valve is designed to withstand the vibration and road shock inherent in tank truck systems available in two- and three-way types. Many of these pilots were originally designed for use in aircraft and helicopter fuel systems, hence they are light, small, and rugged. Whittaker float type pilot valves installed in one transport have logged well over three million miles without maintenance.

Features

- Lightweight rugged design
- Vibration and road shock resistant design
- Maintenance free - no rubber parts (except F610)
- Pre-check standard (except F610)
- Collector can optional on F602, not needed on F610 and F619
- Two-way valve with float down to close (F610) or float up to close (F602)
- Three-way valve (F619) can be used in lieu of F613 jet level sensor if desired

F602 Features and Notes:

- Add suffix "B" to obtain collector drain can. (adds .25 lbs)
- Add suffix "C" to obtain modification necessary for use with F395 control valve (deletes pre-check feature)
- Pre-check and pilot lines to be 3/8" I. D. tube
- Float down - valve is open
- Use with Whittaker F383, F394 or F395 line mounted shutoff Valves
- Maximum system pressure - 60 psi

F610 two-way pilot valve -weight
.75 Lbs

F610 Features and Notes:

- Refer to F602 for installation dimensions
- Float down - valve is closed
- Maximum system pressure - 120 psi
- Viton seal suitable for air or fuel usage

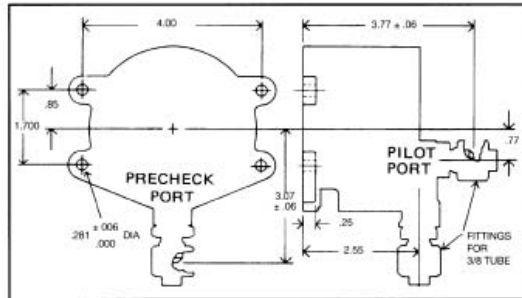
F619 Features and Notes:

- Add suffix "A" to F619 part number to receive tube fittings (3/8") and packings for two ports; suffix "B" for all three ports.
(See reverse side)

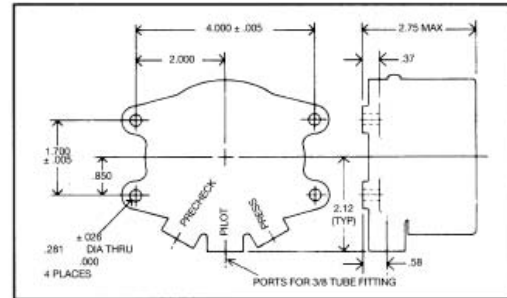
MEGGITT

FLOAT PILOT VALVES

F602 - F610 - F619



F602 2-Way Pilot Valve - Weight .75 Lbs



F619 3-Way Pilot Valve - Weight .65 Lbs

Avery-Hardoll
 Holland Way
 Blandford Forum
 Dorset DT11 7BJ
 UK

Tel: +44 (0) 1258 486600
 Fax: +44 (0) 1258 486601

www.meggittfuelling.com

Whittaker Controls
 12838 Saticoy St
 North Hollywood
 California 91605-3505
 USA

Telephone: +1 818 765 8160
 FAX: + 1818 759 2194

www.wkr.com
www.meggitt.com

MEGGITT