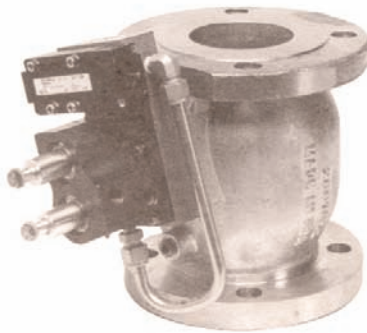


Meggitt Fuelling Products

Avery-Hardoll Whittaker Controls

F375-3 AND F377-4



F375-3 (three-inch) pictured above

Spring set demand control valves

These demand regulators are basically the same as the Whittaker air set valves except they utilize adjustable springs to achieve accurate and repeatable pressure control.

The valve eliminates the need for the OEM to install air regulators or gages. The valves are factory set per the customer requirements see operating characteristics.

The unit can be provided with tamper resistant wire locked adjustments.

When installed on a hydrant servicer with an F756 fail safe water probe and an F239 coupler all points of air to fuel interface are eliminated.

Operating characteristics

- Working pressure 200 psig
- Closure time-in accordance w/ATA1 03 and NFPA407
- Aircraft valve response .75 sec
- Opening time adj. 10-50 sec
- Peak surge 275 psi
- Fuel sense line o be .375-inch ID min
- Inlet pipe to be 15-inches straight before valve

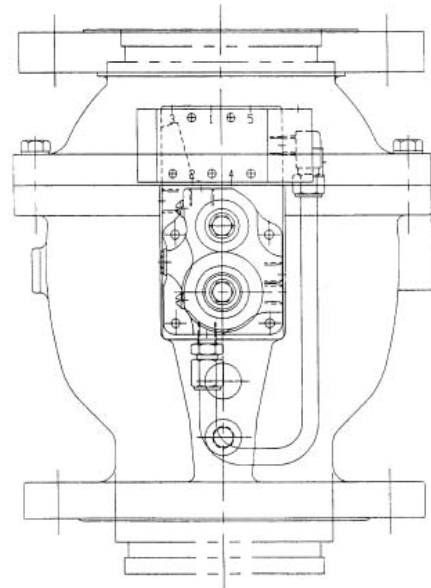
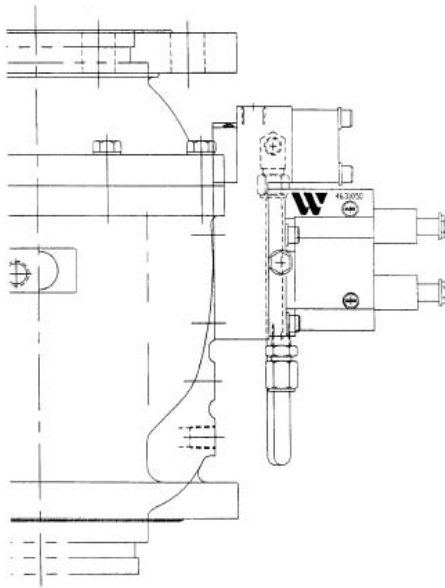
Features

- Valves are pilot operated
- Eliminates air to fuel interface
- Eliminates the need for regulated air pressure
- Eliminates air gages and regulators
- Eliminates the need to remove Whittaker valves from the line conversion can be accomplished in the field
- Can be incorporated into pit valve control units F372 and F368
- Unique manifold design minimizes external piping
- Eliminates leak joints due to manifold design
- ASA 150 lb flanges standard victaulic in and out optional
- Adjustable opening time
- Adjustable surge control point
- Adjustable closing time may be field incorporated
- Can incorporate air or electric deadman, users' choice

MEGGITT

F375-3 AND F377-4

F375-3 AND F377-4



Avery-Hardoll
Holland Way
Blandford Forum
Dorset DT11 7BJ
UK

Tel: +44 (0) 1258 486600
Fax: +44 (0) 1258 486601

www.meggittfuelling.com

Whittaker Controls
12838 Saticoy St
North Hollywood
California 91605-3505
USA

Telephone: +1 818 765 8160
FAX: + 1818 759 2194

www.wkr.com
www.meggitt.com

MEGGITT