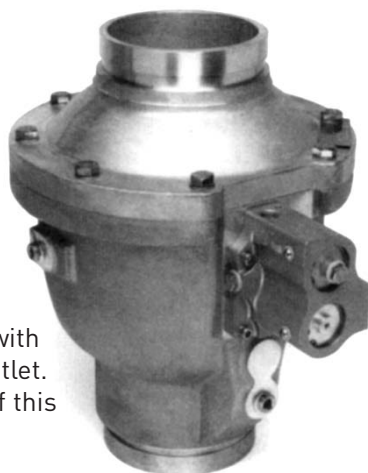


Meggitt Fuelling Products

Avery-Hardoll Whittaker Controls

AIR SET INLINE PRESSURE CONTROL VALVES F351 (SIX-INCH), F370 (FOUR-INCH) AND F376 (THREE-INCH)



Pictured is an F370 with Victaulic inlet and outlet. It is representative of this series of valves.

PRESSURE CONTROL VALVES

The Whittaker family of line mounted control valves for aircraft refueller and hydrant service applications are available in three, four and six-inch sizes.

SPECIAL NOTES:

For proper operation sense line must be 0.375-inch I.D. minimum inlet piping- must be straight for 15-inches and of same I.D. as valve.

Typical schematics illustrating the use of the line mounted control valves and other accessories are shown in the technical section. These schematics are not necessarily complete systems but are intended for reference only.

One of the fine features of the Whittaker control valve is its low opening pressure leading to a low pressure loss. The curves shown illustrate these features.

Refer to the back page for specific details on each valve type.

Reverse flow is a standard design feature on this series of valves if defuelling is a requirement.

See the modification section of this catalog for various options to the part number listed above.

Contact your local Whittaker distributor or Whittaker directly for technical information beyond that listed in the technical section of this catalog.

Features

- Low pressure drop - piston style valve produces lowest pressure drop of any valve.
- Surge control - where required the unique servo design provides closing speeds faster than valves closures on any aircraft.

Additional Features

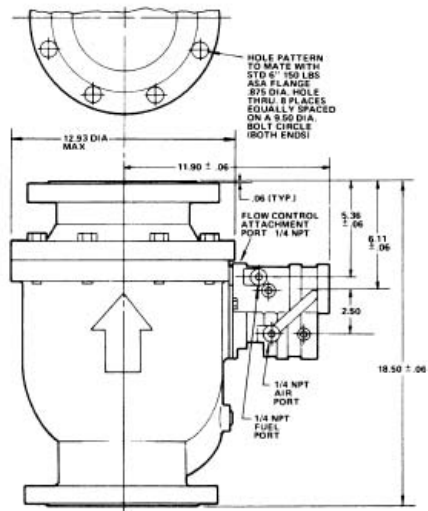
- Dead man control - fast, positive deadman shutoff
- Close control and stability - pressure and flow control extremely stable with narrow band control
- Air-set design - this Whittaker originated feature eliminates need for spring adjustments magnitude of air reference pressure determines fuel control pressure
- Corrosion protection - All aluminum valves with ORES (corrosion resistant steel) trim to provide maximum corrosion resistance. Some sizes available in Ductliron with ORES servos
- Copper free - no copper or copper alloy used in contact with fuel ,
- Custom mounting - most valves available with choice of inlet and outlet in any combination of Victaulic or flanged connections, flange standard
- Valve types - air set and spring set demand regulators, venturi sensed bypass regulators, relief valves and other combinations available to suit your system
- Accessories - additional pilots available to provide flow control, over pressure protection and electrical shutoff functions

MEGGITT

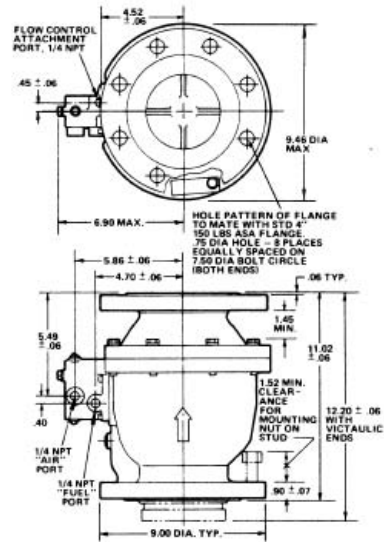
AIR SET INLINE AIR PRESSURE CONTROL VALVES

F351 (SIX-INCH), F370 (FOUR-INCH) AND F376 (THREE-INCH)

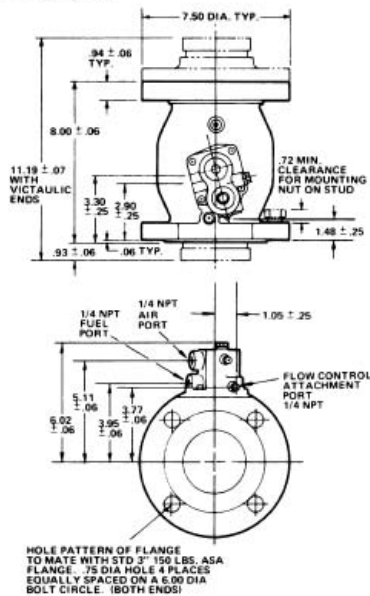
F351 Dimensions



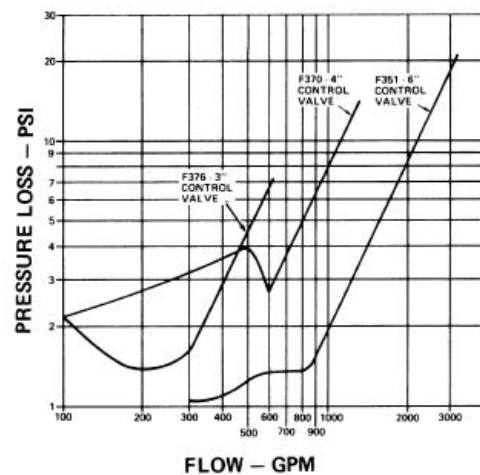
F370 Dimensions



F376 Dimensions



Flow Data



Avery-Hardoll
Holland Way
Blandford Forum
Dorset DT11 7BJ
UK

Whittaker Controls
12838 Saticoy St
North Hollywood
California 91605-3505
USA

Tel: +44 (0) 1258 486600
Fax: +44 (0) 1258 486601

Telephone: +1 818 765 8160
FAX: + 1818 759 2194

www.meggittfuelling.com

www.wkr.com
www.meggitt.com

MEGGITT