

NON PRESSURE CONTROL COUPLER F211 - 2.5-INCH BAYONET FLANGE CONNECTION



F211 bayonet flange connection nonpressure control coupler

The F211 2.5-inch coupler is a lightweight rugged version of the Whittaker underwing nozzle modified for use in connecting a refuelling hydrant dispenser to hydrant systems utilizing the 2.5 inch international standard aircraft type bayonet connection. The F211 supersedes the previous Whittaker couplers F200, F204 and F205. The basic F211, like the F116 and F117 nozzles, is furnished with a six bolt mounting flange on its outlet to allow connection with various Whittaker swivels to form a complete unit. This allows you to design a coupler expressly for your system. The basic F211 is provided with six position product selection which allows keying your system to load the proper product.

The F211 coupler with one of the optional straight swivels is commonly used for bottom loading of aircraft refuellers. It must be used if product selection is required and is recommended for all bottom loading applications to minimize maintenance.

Features

- Mates with International Standard bayonet adapter (2.5-inch diameter)
- Floating nose seal - replaceable on hose
- Modular seat - poppet design
- Six-position product selection standard. Single pin selector standard with three pins optional. All unused selection holes closed
- Heavy duty shell grips and two-bolt stirrup handles standard
- Manganese bronze flow control handle standard
- Product selection to mate Avery-Hardoll hydrants available as an option
- 2.5, 3, 3.5 and 4-inch ANPT and 2.5-inch BSP outlets with straight swivels or double swivels and a 90° elbow available
- Replaceable cres ball races in swivels standard
- Dust cap standard equipment

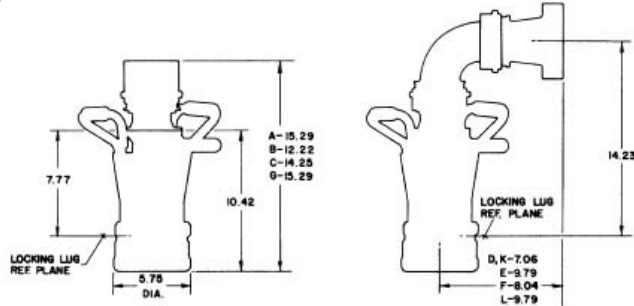
See the modification section of this catalog for various options to the part number listed above.

Contact your local Whittaker distributor or Whittaker directly for technical information beyond that listed in the technical section of this catalog.

NONPRESSURE CONTROL COUPLER

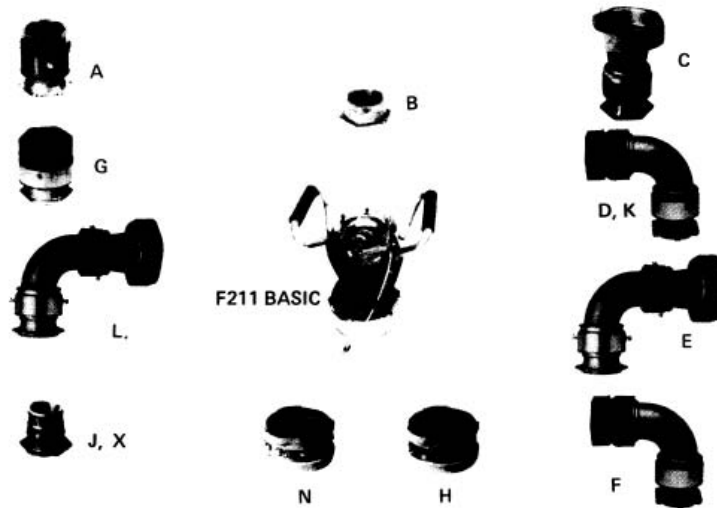
F211 - 2.5-INCH BAYONET FLANGE CONNECTION

F211 Dimensions



F211 Coupler Modifications

To order the Whittaker F211 Hydrant Coupler add the appropriate suffix from Table 1.



Example Part Number and Weight Calculation:

F211F = Basic F211 with 90° elbow,
double swivel and 3 inch NPT outlet.

Weight = 11.75 + 8.00
= 19.75 lbs.

Avery-Hardoll
Holland Way
Blandford Forum
Dorset DT11 7BJ
UK

Tel: +44 (0) 1258 486600
Fax: +44 (0) 1258 486601

www.meggittfuelling.com

Whittaker Controls
12838 Saticoy St
North Hollywood
California 91605-3505
USA

Telephone: +1 818 765 8160
FAX: + 1818 759 2194

www.wkr.com
www.meggitt.com

MEGGITT