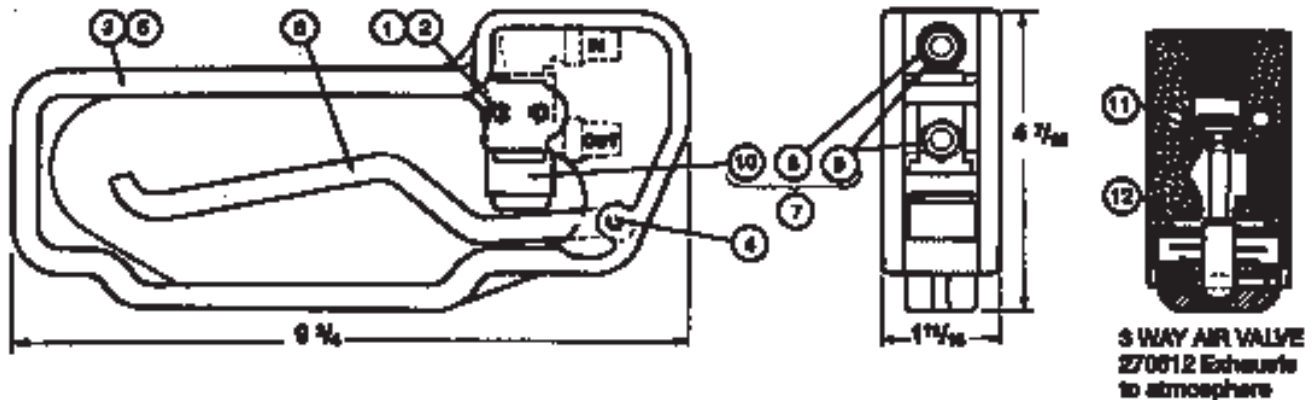


DEADMAN CONTROL ASSEMBLIES

13024KB, 13024KE-50, 13024KHC, 13024KHO

Whittaker deadman control assemblies are designed for use on aircraft refuelling trucks or carts, bottom loading installations or other applications requiring deadman control. All assemblies are "hand held." Depressing operating lever actuates a valve or switch to condition fuel system for flow startup. Releasing lever causes flow to stop.

Valve Part No.	Type Control	Connection
13024KB	Pneumatic, 3-way normally closed	1/4" male NPT
13024KE-50	Electric, normally open	2 conductor 18-2, Type 80
13024KH-O	Hydraulic, normally closed	3/8" female NPT
13024KO-O	Hydraulic, normally open	3/8" female NPT



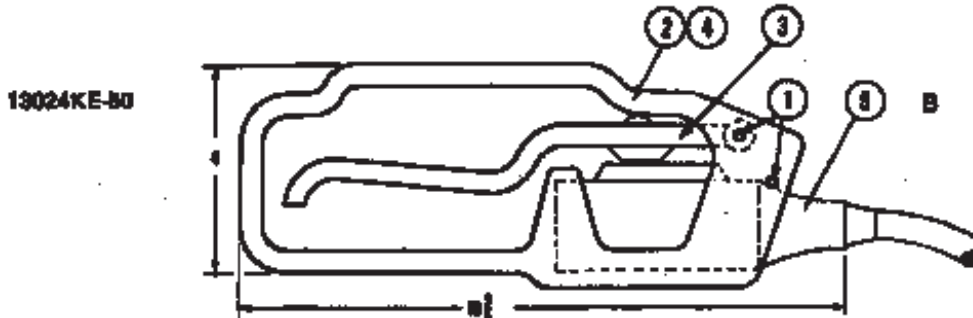
QTY.	PART NO.	DESCRIPTION
1	ANE15-B-24	Screw
2	MB20355-8520	Nut
3	13024KA-1A	Handle & lever assy.
4	ME171800	Roll pin
5	13024KA-1	Handle
6	13024KA-2	Lever
7	13024KS-1-1	Air valve assy.
8	2700007	1/8" elbow
9	2700006	1/8" x 1/4" nipple
10	270012-101	3-way air valve
11	2881058A007	O-ring
12	2881058A010	O-ring

*To eliminate the necessity of removing the Air Valve when attaching the air hoses, Item 1, 2 and 7 are supplied unattached in a separate package.

DEADMAN CONTROL ASSEMBLIES

13024KB, 13024KE-50, 13024KHC, 13024KHO

Electric deadman control

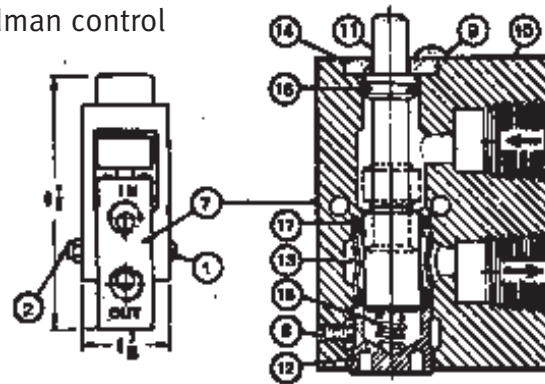
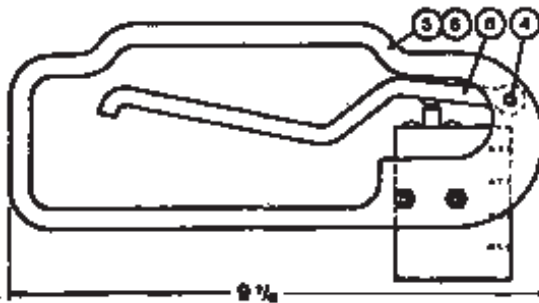


SWITCH: SP-5T NORMALLY OPEN.
Totally enclosed in molded neoprene, but not explosion-proof.

CONTACT RATINGS: 15 amp - 125 or 250 Vac
5 amp - 12 VDC

SYML	PART NO.	REQ.	DESCRIPTION
1	M60048-175	2	Roll Pin
2	13024KE-1A	1	Handle & Lever Assy.
3	13024KE-2	1	Lever
4	13024KE-1	1	Guard
6B	Z709118	1	Switch with 50 ft. of cable

13024KHC, and 13024KHO Hydraulic deadman control



1. Loosen SE1 (8) set screw (Item #8)
2. Tighten Valve Cap (Item #12) until spool starts to hang up when depressed.
3. Loosen Valve Cap slightly until spool operates freely.
4. Tighten set screws.

Normally closed valve assembly illustrated above.

Dotted line show configuration of normally open spool.

SYML	PART NO.	QTY.	DESCRIPTION
1	AN515-B-25	2	Screw
2	M620665-832C	2	Nut
3	13024H-1A	1	Handle & Lever Assy.
4	M6171696	1	Roll Pin
5	13024H-1	1	Guard
6	13024KA-2	1	Lever
7A	13024HVC	1	Normally closed valve Assy.
or 7B	13024HVO	1	Normally open valve Assy.
8	SE108	1	Socket Head Set Screw

SYML	PART NO.	QTY.	DESCRIPTION
9	SG108	1	Socket Head Screw
10	13024HV-1	1	Valve Body
11A	13024HV-2	1	Normally closed spool
or 11B	13024HV-2A	1	Normally open spool
12	13024HV-3	1	Valve Cap
13	13024HV-4	1	Seal Caps
14	13024HV-5	1	Retainer
15	2412A-B-2	1	Spring
16	2661056AC12	1	O-ring
17	2661058A112	2	O-ring

Avery-Hardoll
Holland Way
Blandford Forum
Dorset DT11 7BJ
UK

Whittaker Controls
12838 Saticoy St
North Hollywood
California 91605-3505
USA

Tel: +44 (0) 1258 486600
Fax: +44 (0) 1258 486601

Telephone: +1 818 765 8160
FAX: +1 818 759 2194

www.meggittfuelling.com

www.wkr.com
www.meggitt.com

MEGGITT